

Economic Dashboard – Annual Summary

Economic Development Committee

February 26, 2014 (Revised April 7, 2014)



Indicator Highlights - Annual

	Geography	2011	2012	2013	2012-13% Change	Status
Unemployment Rate	Toronto	9.2%	9.6%	8.8%		
	Canada	7.5%	7.3%	7.1%		
Participation Rate	Toronto	64.9%	65.9%	67.3%		
	Canada	66.8%	66.7%	66.5%		
Total Employed Residents	Toronto	1,266,830	1,286,050	1,320,860	2.7%	
	Canada	17,306,220	17,507,710	17,731,150	1.3%	
Total Value of Building Permits (Billions)	Toronto	\$6.9	\$6.2	\$7.9	27.4%	
	Canada	\$74.0	\$80.9	\$80.8	-0.1%	
Office Vacancy Rate Q4	Toronto	5.4%	5.6%	6.1%	8.9%	
Average House Price	Toronto	\$501,971	\$538,053	\$565,860	5.2%	
	Canada	\$363,300	\$363,700	\$382,500	5.2%	
Business Bankruptcies	Toronto CMA	819	665	619	-6.9%	
	Canada	4,793	4,353	4,281	-1.7%	
Employment Insurance Recipients	Toronto	400,120	356,980	346,300	-3.0%	
	Canada	7,294,900	6,664,970	6,266,060	-6.0%	
Consumer Price Index (2002=100)	Toronto	120.0	121.8	123.3	1.2%	
	Canada	119.9	121.7	122.8	0.9%	
Retail Sales (Billions)	Toronto CMA	\$67.1	\$67.6	\$68.9	1.9%	
	Canada	\$458.5	\$469.9	\$481.8	2.5%	

Note: Top symbol compares how Toronto's position has changed; bottom symbol compares Toronto's performance to Canada



Negative

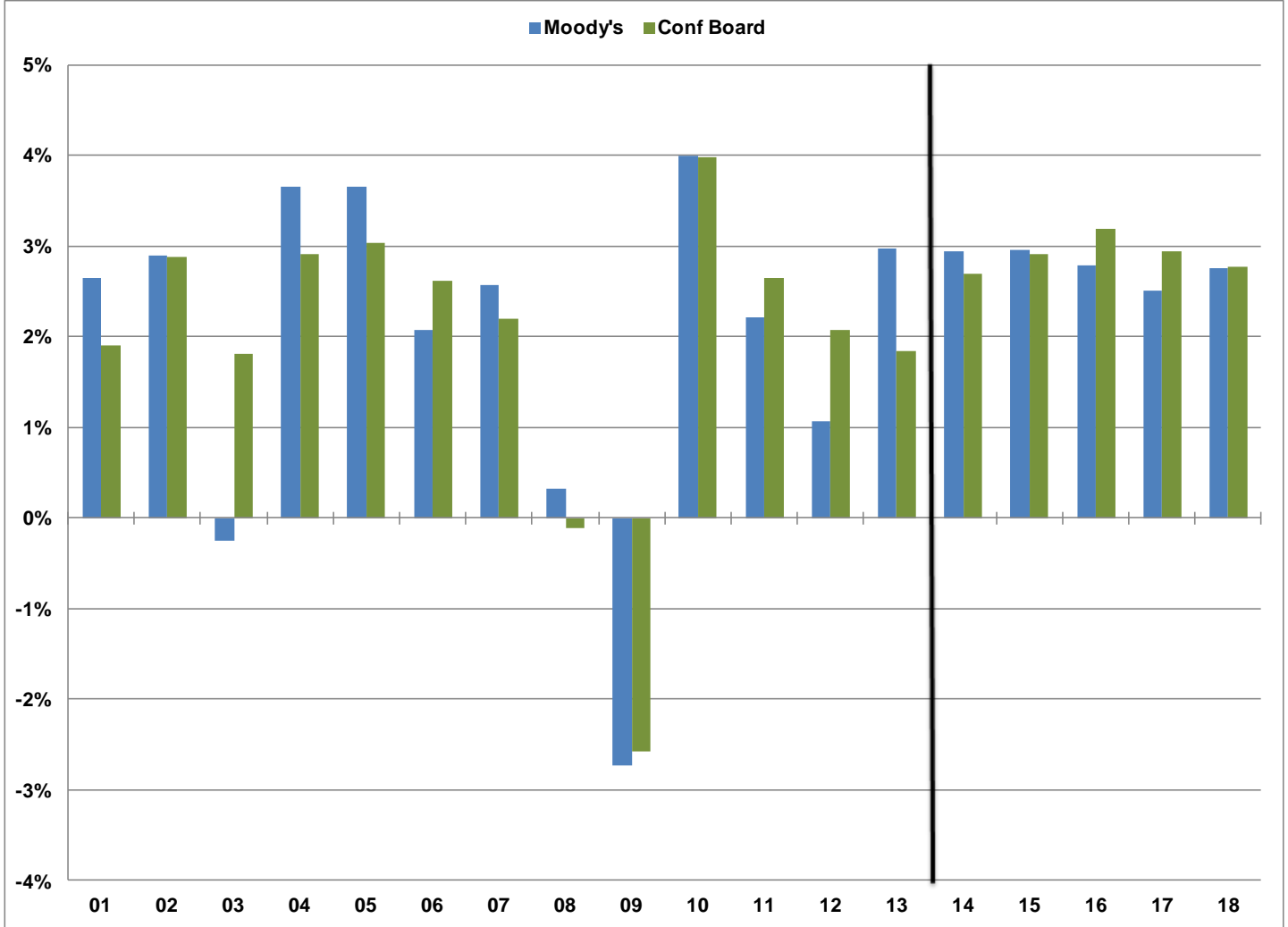


Caution



Positive

Change in Real GDP Toronto CMA



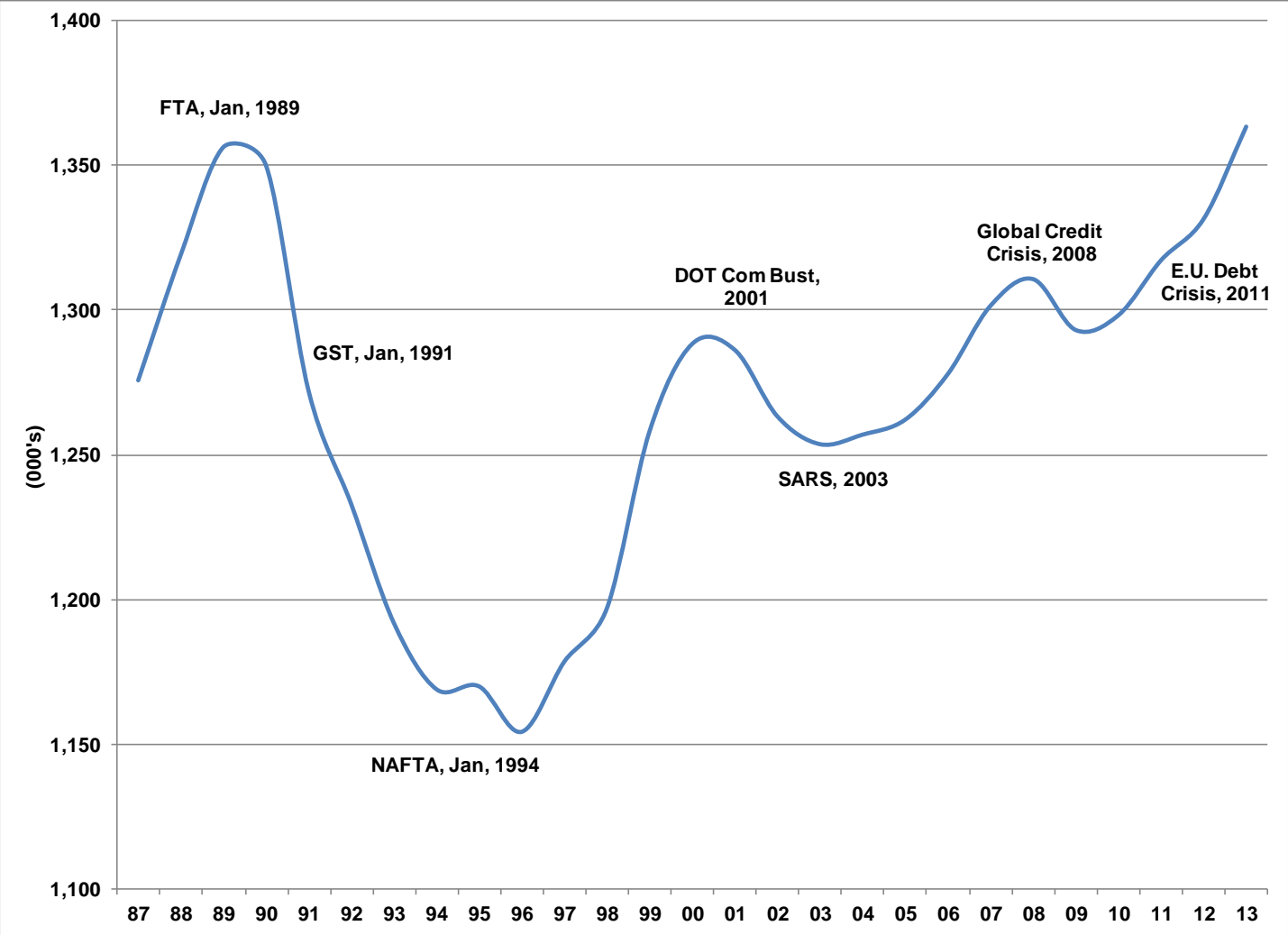
Source: Conference Board of Canada (March 21,2014), Moody's (February 24, 2014)

Change in Real GDP

Toronto CMA

	Moody's	Conference Board	Average
2001	2.65%	1.91%	2.28%
2002	2.90%	2.88%	2.89%
2003	-0.26%	1.80%	0.77%
2004	3.65%	2.91%	3.28%
2005	3.66%	3.03%	3.35%
2006	2.08%	2.62%	2.35%
2007	2.57%	2.21%	2.39%
2008	0.33%	-0.12%	0.11%
2009	-2.74%	-2.57%	-2.65%
2010	3.99%	3.98%	3.99%
2011	2.21%	2.65%	2.43%
2012	1.07%	2.07%	1.57%
2013	2.97%	1.84%	2.41%
2014	2.95%	2.69%	2.82%
2015	2.96%	2.91%	2.93%
2016	2.79%	3.19%	2.99%
2017	2.51%	2.95%	2.73%
2018	2.76%	2.77%	2.76%

Jobs in the City of Toronto Establishment Survey



Jobs in the City of Toronto

Establishment Survey

	Total Employment (000's)	Y-Y Change (000's)
1987	1275.8	
1988	1319.3	43.5
1989	1356.5	37.2
1990	1350.1	-6.4
1991	1272.0	-78.1
1992	1232.9	-39.1
1993	1191.8	-41.1
1994	1168.9	-22.9
1995	1169.9	1.0
1996	1154.2	-15.7
1997	1178.5	24.3
1998	1197.0	18.5
1999	1258.2	61.2
2000	1288.4	30.2
2001	1286.3	-2.1
2002	1263.3	-23.0
2003	1253.7	-9.6
2004	1257.0	3.3
2005	1262.2	5.2
2006	1278.0	15.8
2007	1301.6	23.6
2008	1310.8	9.2
2009	1293.2	-17.6
2010	1298.3	5.1
2011	1317.3	19.0
2012	1331.6	14.3
2013	1363.6	32.0

Business Climate

Toronto Ranks Well Internationally

Toronto Region Board of Trade – Scorecard on Prosperity - 2014

Toronto ranks **3rd of 24** global metropolitan regions

KPMG's Comparative Alternatives Study – Business Location Costs - 2014

Toronto ranks **2nd of 34** North American cities with population of 2 million or more for lowest business costs

PricewaterhouseCoopers - Cities of Opportunity - 2012

Toronto ranks **3rd of 27** cities globally in current social and economic performance

Aon Hewitt – People Risk Index – 2013

Toronto ranks **3rd of 138** global metropolitan areas for lowest risk in the world for recruiting, employing & relocating employees

CIBC - Canadian Cities: An Economic Snapshot - 2012

Toronto ranks **1st of 25** Canadian CMAs for economic performance

Economist Intelligence Unit and CitiGroup – City Competitiveness Index- 2013

Toronto ranks **10th of 120** cities for global competitiveness

fDI Magazine – American Cities of the Future - 2013

Toronto ranks **2nd of 10** North American cities for attractiveness for inward investment

Reputation Institute – Reputable Cities – 2013

Toronto ranks **2nd of 100** global cities for reputation

Business Climate

Toronto Ranks Well Internationally

Colliers International – Office Markets Lowest Vacancy Rate - 2012
Toronto ranks **7th of 75** in office markets in North America

Z/Yen Group – Global Financial Centres Index – 2014
Toronto ranks **14th of 83** global financial centres

Bloomberg Study – World's Strongest Banks – 2013
Canadian Imperial Bank of Commerce (**3rd**), Royal Bank (**4th**), Bank of Nova Scotia (**7th**) and TD Bank (**8th**), all headquartered in Toronto, rank among the top 10 strongest banks out of **78 global banks**

Mercer Consulting – Quality of Living Ranking Survey - 2014
Toronto ranks **3rd** in North America and **15th** globally for liveability

Economist Intelligence Unit – Liveability Ranking - 2013
Toronto ranks **4th of 140** cities for liveability

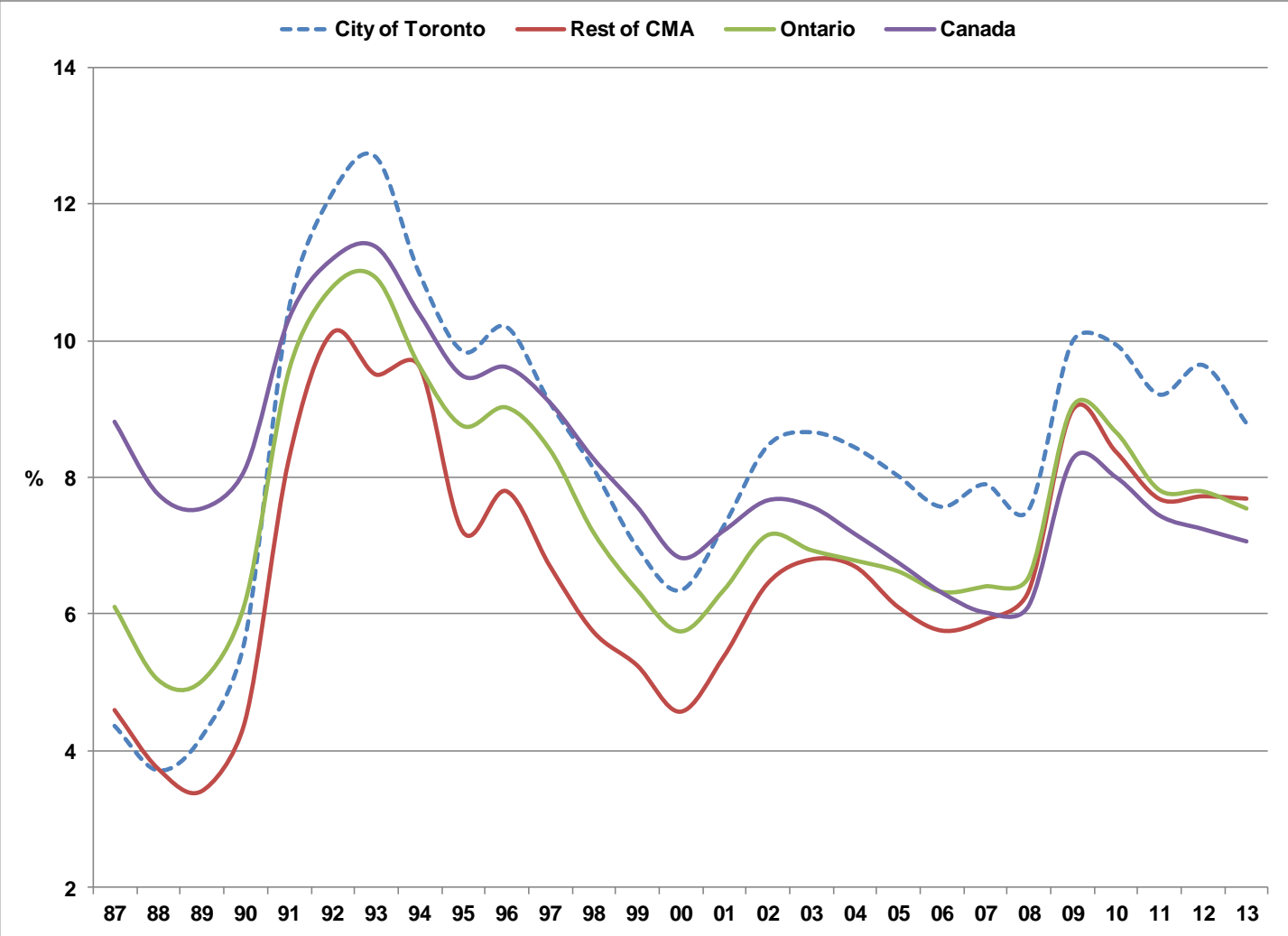
Simon Anholt – Anholt-GfK Roper City Brands Index – 2013
Toronto ranks **8th of 50 global cities** for overall brand image

Times Higher Education – Top University by Reputation - 2013
University of Toronto ranks **16th of 100** global universities

QS World University Ranking – University Ranking - 2013
University of Toronto ranks **17th of 833** global universities

Shanghai Jiao Tong University – Academic Ranking of World Universities - 2013
University of Toronto ranks **28th of 1000** global universities

Unemployment Rate

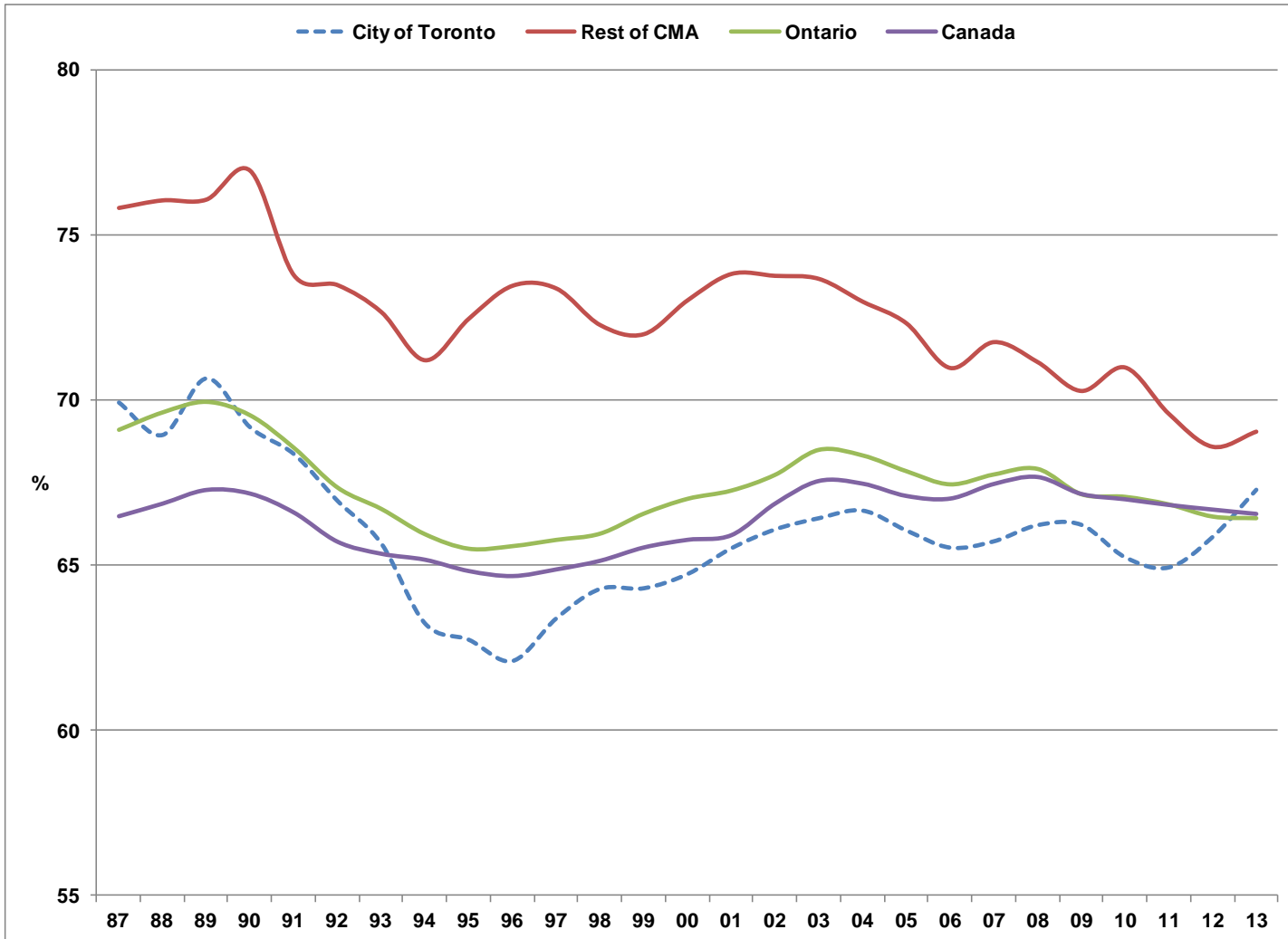


Source : Statistics Canada – Labour Force Survey

Unemployment Rate

	City of Toronto	Rest of CMA	Ontario	Canada
1987	4.37	4.60	6.1	8.82
1988	3.72	3.74	5.03	7.76
1989	4.21	3.41	5.01	7.55
1990	5.65	4.44	6.17	8.13
1991	10.45	8.26	9.55	10.32
1992	12.15	10.12	10.78	11.20
1993	12.68	9.50	10.92	11.38
1994	10.98	9.63	9.63	10.40
1995	9.84	7.20	8.75	9.49
1996	10.20	7.80	9.02	9.62
1997	9.09	6.70	8.40	9.10
1998	8.13	5.74	7.19	8.28
1999	6.98	5.25	6.35	7.58
2000	6.35	4.57	5.74	6.83
2001	7.30	5.39	6.35	7.23
2002	8.46	6.45	7.15	7.67
2003	8.66	6.80	6.93	7.58
2004	8.44	6.70	6.78	7.18
2005	8.02	6.10	6.62	6.76
2006	7.57	5.76	6.32	6.32
2007	7.90	5.92	6.40	6.03
2008	7.53	6.34	6.54	6.13
2009	9.98	8.98	9.03	8.27
2010	9.94	8.38	8.66	8.01
2011	9.21	7.69	7.81	7.45
2012	9.64	7.72	7.79	7.25
2013	8.79	7.69	7.54	7.07

Participation Rate

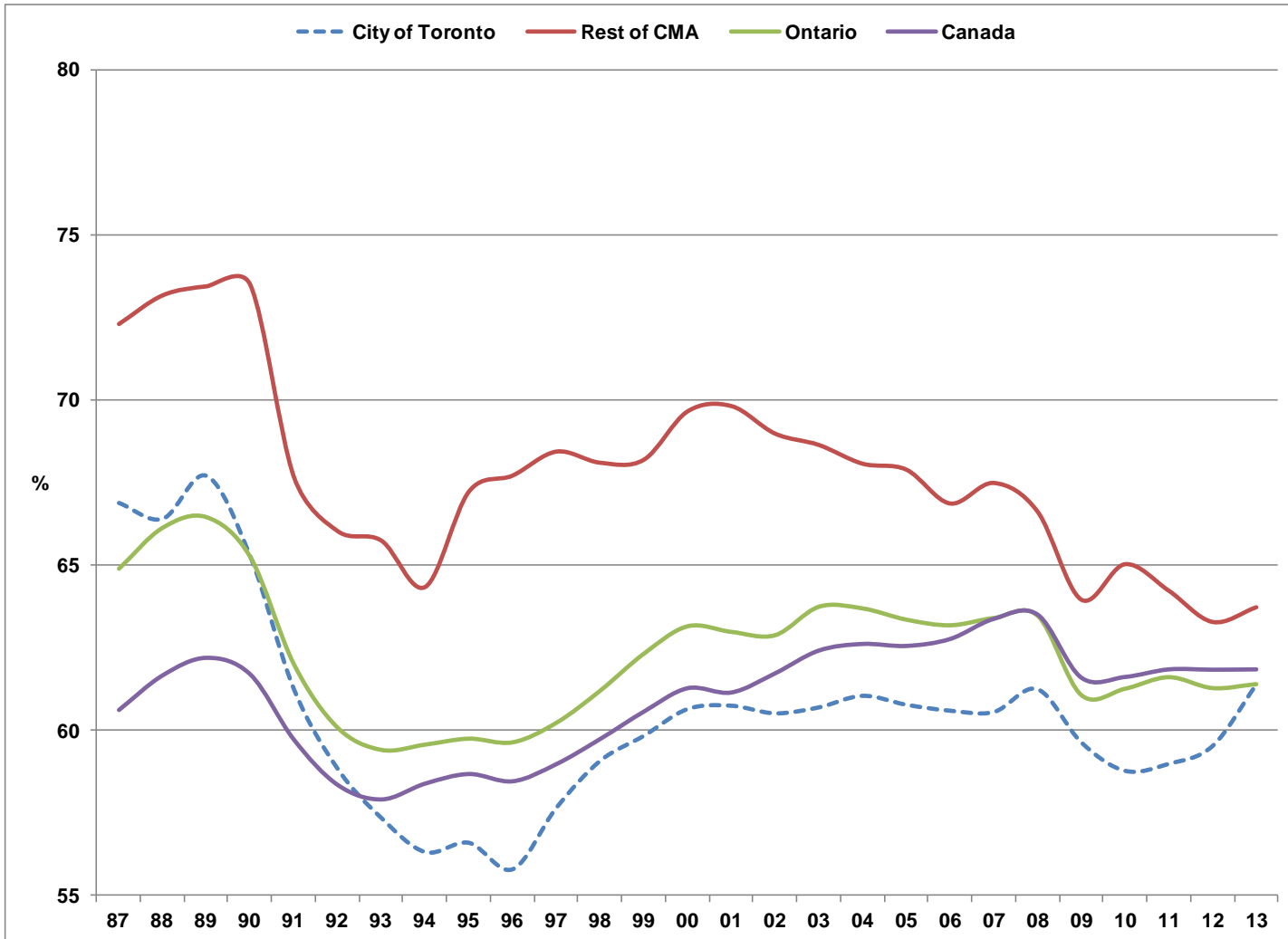


Participation Rate

	City of Toronto	Rest of CMA	Ontario	Canada
1987	69.93	75.80	69.1	66.47
1988	68.95	76.02	69.63	66.85
1989	70.66	76.05	69.95	67.26
1990	69.18	76.92	69.54	67.15
1991	68.37	73.76	68.55	66.58
1992	66.95	73.46	67.34	65.70
1993	65.66	72.64	66.69	65.34
1994	63.24	71.19	65.92	65.16
1995	62.75	72.44	65.48	64.82
1996	62.11	73.44	65.56	64.67
1997	63.40	73.36	65.75	64.87
1998	64.29	72.25	65.94	65.13
1999	64.31	71.98	66.55	65.53
2000	64.74	73.00	67.00	65.76
2001	65.52	73.80	67.25	65.90
2002	66.09	73.74	67.73	66.85
2003	66.43	73.65	68.49	67.53
2004	66.66	72.96	68.32	67.45
2005	66.06	72.31	67.84	67.08
2006	65.54	70.95	67.44	67.00
2007	65.73	71.73	67.74	67.44
2008	66.22	71.13	67.91	67.65
2009	66.23	70.26	67.14	67.14
2010	65.25	70.97	67.06	66.98
2011	64.94	69.57	66.83	66.81
2012	65.86	68.57	66.46	66.67
2013	67.29	69.03	66.41	66.54

Employment Rate

Employment / Population age 15+



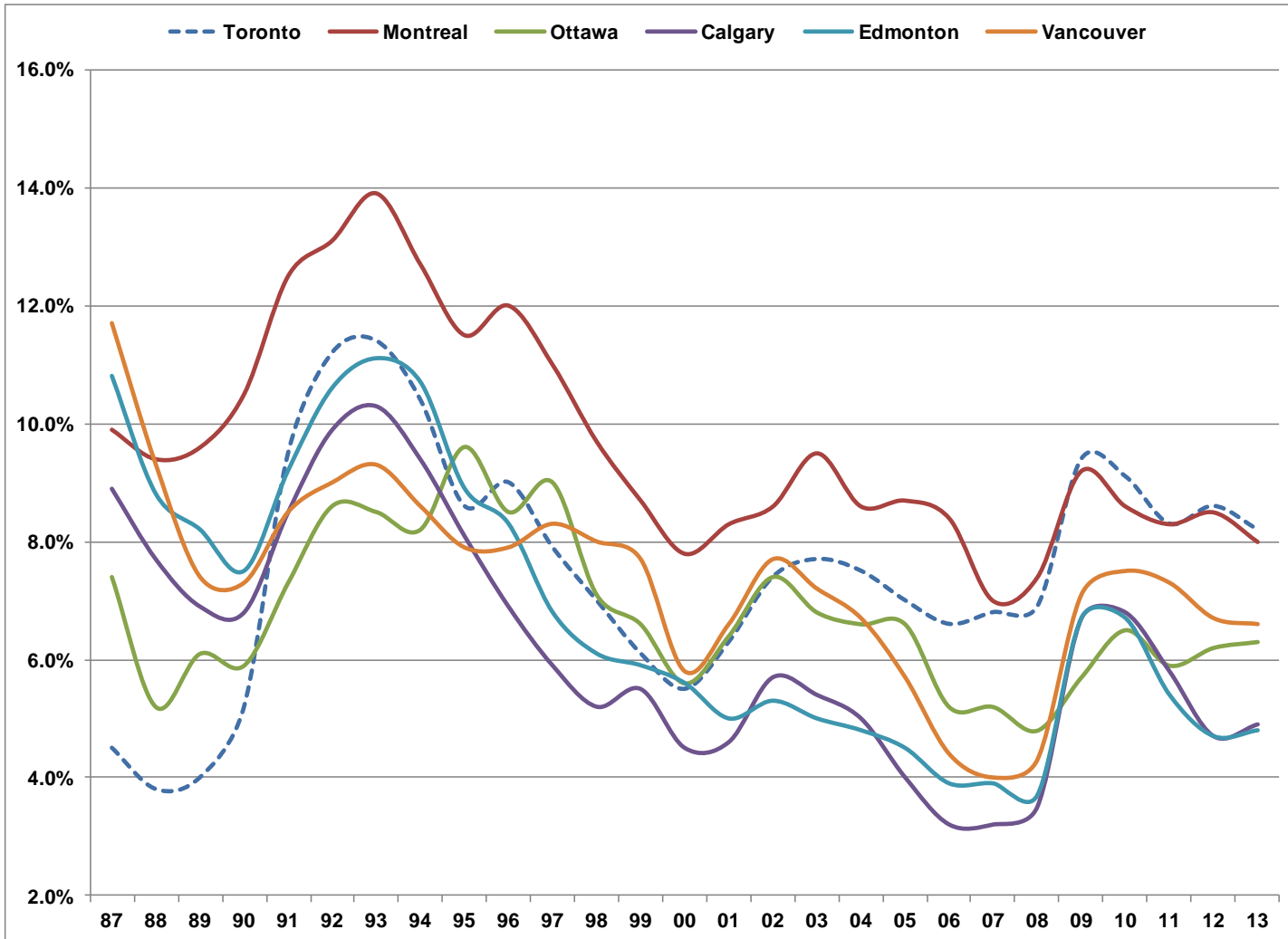
Employment Rate

Employment / Population age 15+

	City of Toronto	Rest of CMA	Ontario	Canada
1987	66.87	72.31	64.89	60.61
1988	66.39	73.18	66.13	61.66
1989	67.69	73.45	66.45	62.19
1990	65.26	73.50	65.25	61.69
1991	61.23	67.67	62.00	59.71
1992	58.82	66.03	60.08	58.34
1993	57.33	65.74	59.41	57.90
1994	56.30	64.33	59.57	58.38
1995	56.58	67.23	59.75	58.67
1996	55.78	67.71	59.64	58.45
1997	57.64	68.44	60.23	58.97
1998	59.06	68.10	61.20	59.73
1999	59.82	68.19	62.32	60.56
2000	60.63	69.66	63.15	61.27
2001	60.73	69.82	62.98	61.14
2002	60.50	68.98	62.88	61.72
2003	60.68	68.64	63.74	62.41
2004	61.03	68.07	63.69	62.61
2005	60.76	67.89	63.35	62.55
2006	60.58	66.87	63.18	62.76
2007	60.54	67.49	63.40	63.37
2008	61.23	66.62	63.47	63.50
2009	59.62	63.95	61.07	61.59
2010	58.76	65.02	61.26	61.61
2011	58.97	64.22	61.61	61.84
2012	59.51	63.27	61.28	61.83
2013	61.37	63.72	61.4	61.84

Unemployment Rate

Major Canadian Urban Regions



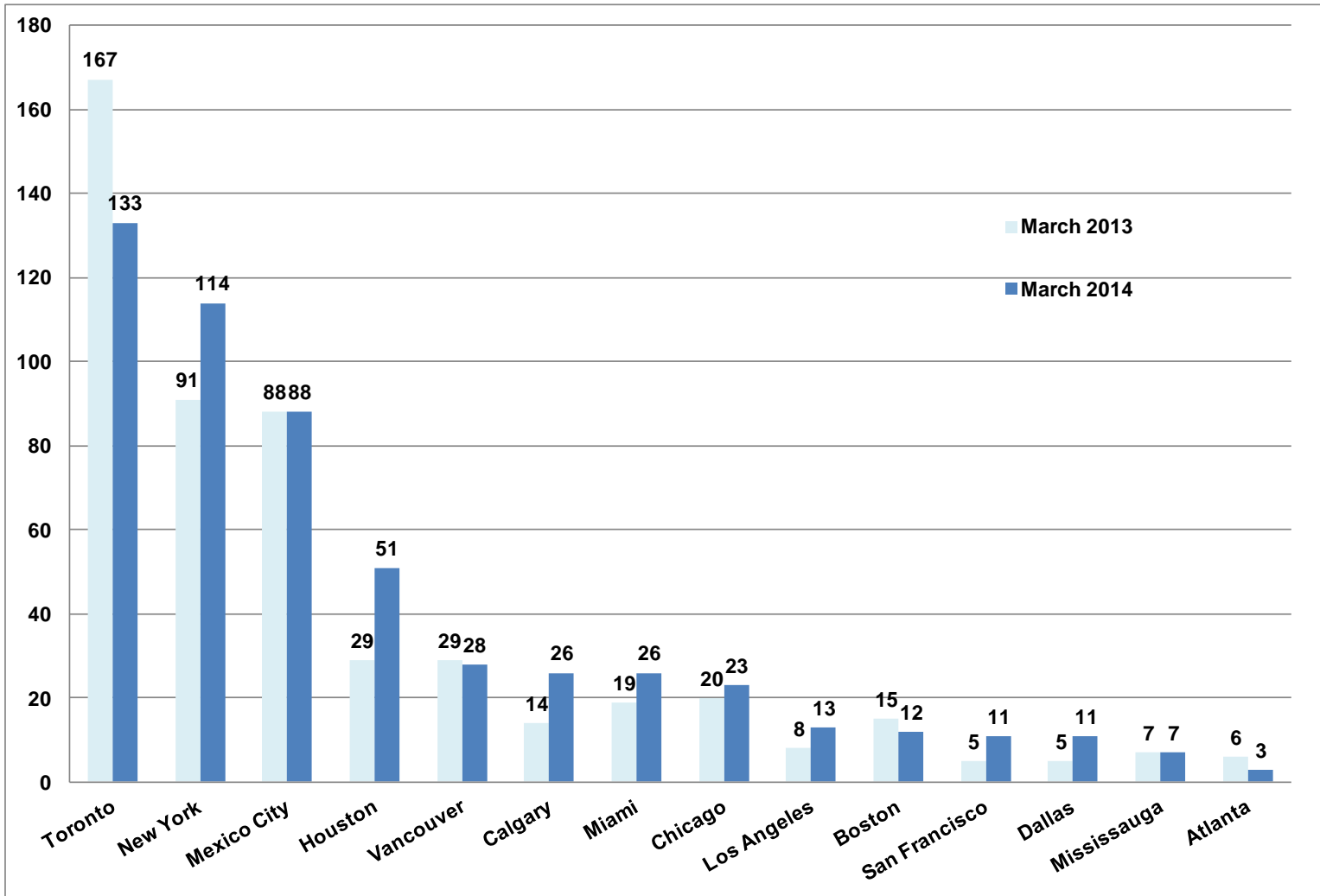
Unemployment Rate

Major Canadian Urban Regions

	<u>Toronto</u>	<u>Montreal</u>	<u>Ottawa</u>	<u>Calgary</u>	<u>Edmonton</u>	<u>Vancouver</u>
1987	4.5	9.9	7.4	8.9	10.8	11.7
1988	3.8	9.4	5.2	7.7	8.8	9.3
1989	4.0	9.6	6.1	6.9	8.2	7.4
1990	5.2	10.5	5.9	6.8	7.5	7.3
1991	9.5	12.5	7.3	8.5	9.2	8.5
1992	11.2	13.1	8.6	9.9	10.6	9.0
1993	11.4	13.9	8.5	10.3	11.1	9.3
1994	10.4	12.7	8.2	9.4	10.7	8.6
1995	8.6	11.5	9.6	8.1	8.9	7.9
1996	9.0	12.0	8.5	6.9	8.3	7.9
1997	7.9	11.0	9.0	5.9	6.8	8.3
1998	7.0	9.7	7.1	5.2	6.1	8.0
1999	6.1	8.7	6.6	5.5	5.9	7.7
2000	5.5	7.8	5.6	4.5	5.6	5.8
2001	6.3	8.3	6.4	4.6	5.0	6.6
2002	7.4	8.6	7.4	5.7	5.3	7.7
2003	7.7	9.5	6.8	5.4	5.0	7.2
2004	7.5	8.6	6.6	5.0	4.8	6.7
2005	7.0	8.7	6.6	4.0	4.5	5.7
2006	6.6	8.4	5.2	3.2	3.9	4.4
2007	6.8	7.0	5.2	3.2	3.9	4.0
2008	6.9	7.4	4.8	3.5	3.7	4.3
2009	9.4	9.2	5.7	6.7	6.7	7.1
2010	9.1	8.6	6.5	6.8	6.7	7.5
2011	8.3	8.3	5.9	5.8	5.4	7.3
2012	8.6	8.5	6.2	4.7	4.7	6.7
2013	8.2	8.0	6.3	4.9	4.8	6.6

High Rise Buildings Under Construction

North American Cities



Tallest Buildings Under Construction

City of Toronto

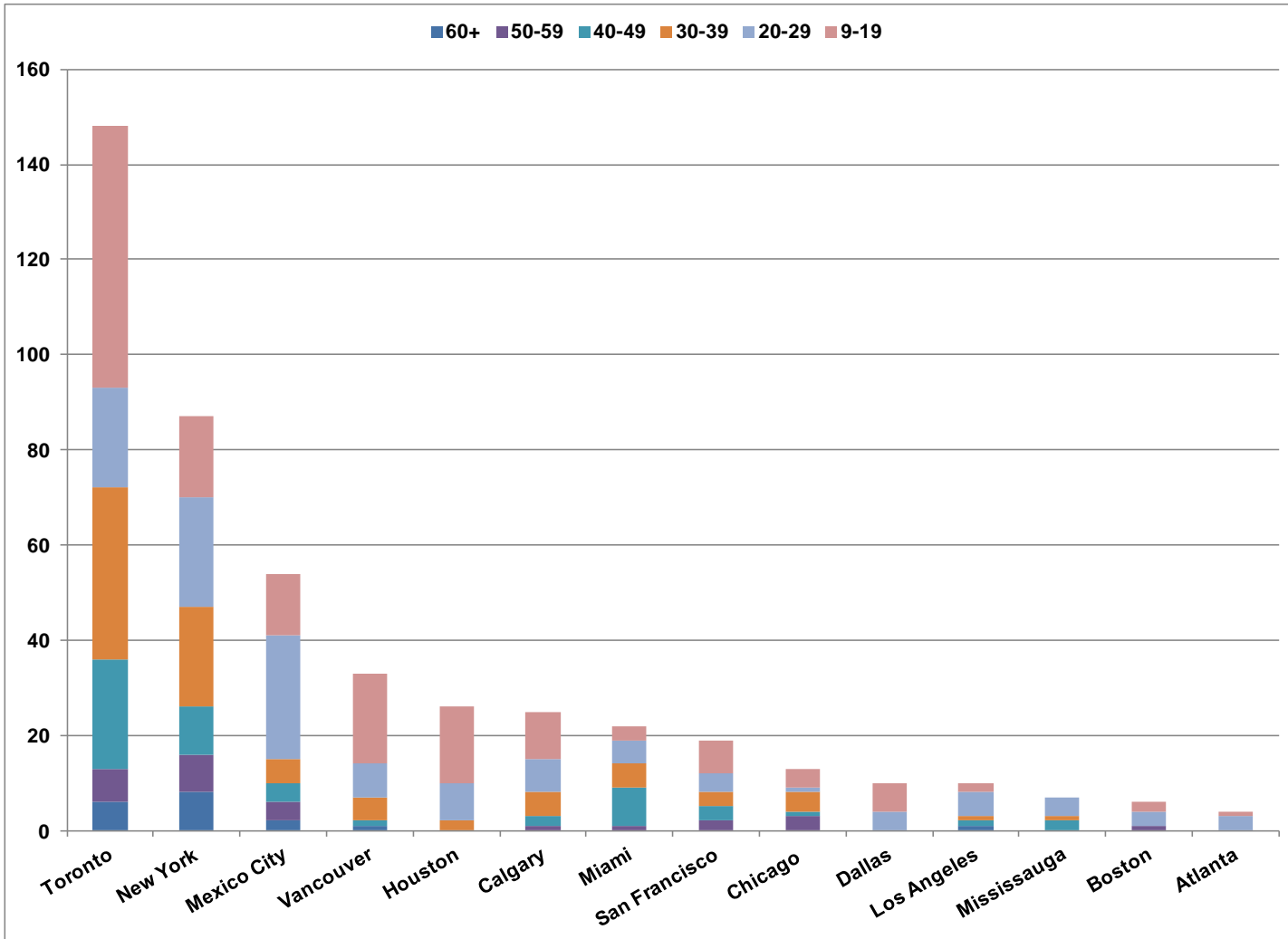
Economic Development
Committee

	Building	Address	Metres	Feet	Floors	Year
1	Aura at College Park	388 Yonge St	272	892	78	2014
2	Number One Bloor	1 Bloor St E	257	844	75	2016
3	Ice Condominiums East	16 York St	234	768	67	2014
4	Harbour Plaza Residences East	90 Harbour St	233	764	66	2017
5	Harbour Plaza Residences West	1 York St	224	735	62	2017
6	Bay-Adelaide East	333 Bay St	196	643	44	2016
7	Casa 2	42 Charles St. E	185	605	57	2016
8	U Condominiums II	St Mary St	184	604	55	2014
9	INDX Condominiums	66 Temperance St	179	587	54	2015
10	One York Street	1 York St	174	569	35	2016
11	Hullmark Centre I	4759 Yonge St	171	561	45	2014
12	Karma	9 Grenville Street	166	544	50	2015
13	FIVE	5 St. Joseph St	161	528	48	2014
14	X2	580 Jarvis St	160	525	44	2014
15	Southcore Financial Centre Delta Hotel	Lower Simcoe Street	160	524	47	2014
16	Theatre Park	224 King West	157	515	47	2014
17	U Condominiums I	St Mary St	154	505	45	2014
18	Westlake Village 1	2200 Lake Shore Blvd W	153	503	48	2014
19	Chaz on Charles	45 Charles St E	151	497	47	2015
20	Westlake Village 2	2200 Lake Shore Blvd W	147	484	44	2014
21	Pace Condominiums	200 Jarvis	146	480	42	2015
22	Emerald Park East Toronto	580 Jarvis St	142	464	39	2015
23	Southcore Bremmer Tower	18 York St	136	445	30	2014
24	Emerald Park West Toronto	580 Jarvis St	112	369	30	2015
25	Westlake Village 3	2200 Lake Shore Blvd W	N/A	N/A	37	2014



High Rise Buildings Under Construction

North American Cities (Skyscraperpage)



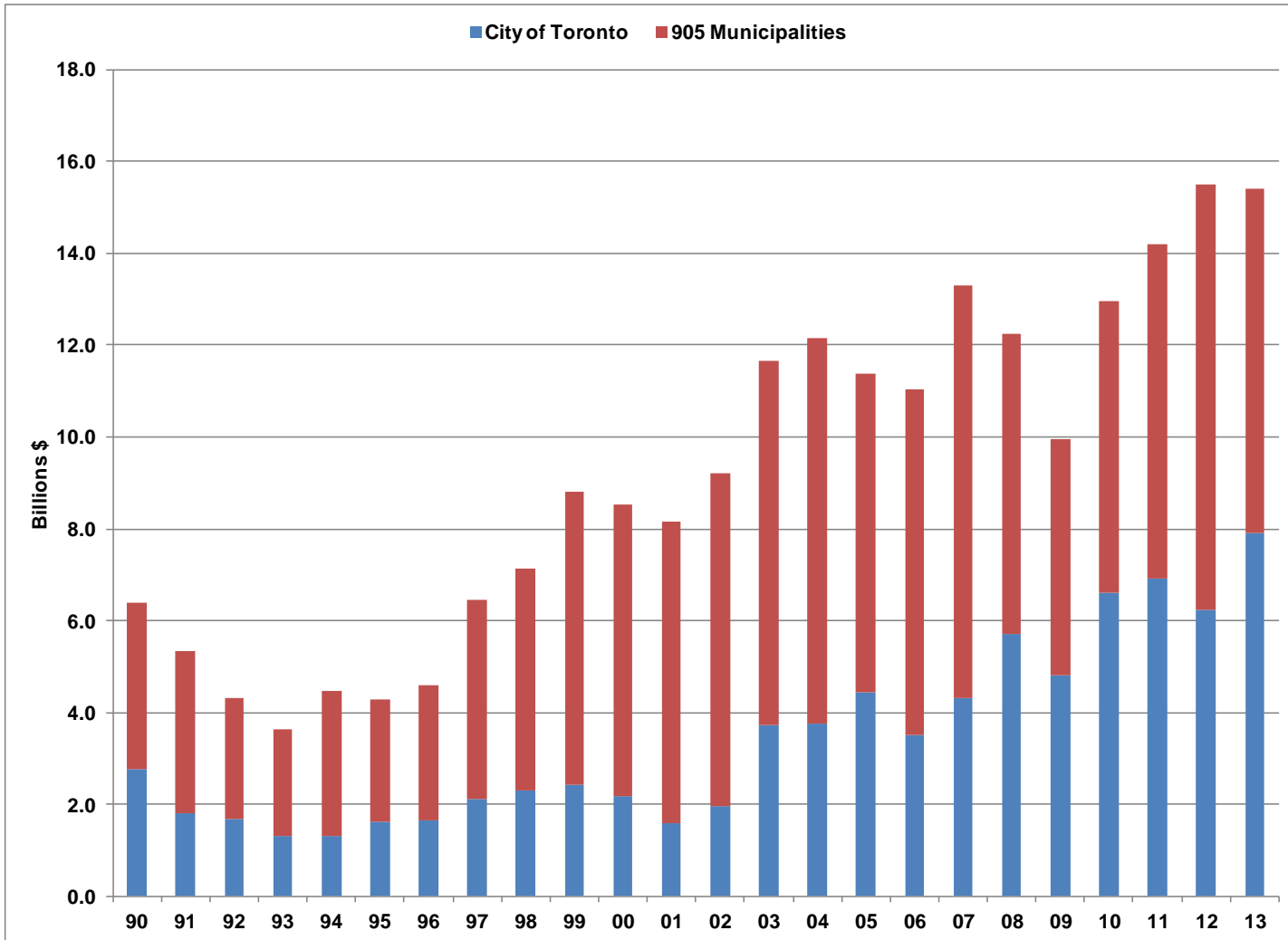
High Rise Buildings Under Construction

City of Toronto by number of floors

<u>Floors</u>	<u>Number of Buildings</u>	<u>Total Floors</u>	<u>Percent of Total</u>
70+	2	153	4%
60-69	4	263	6%
50-59	7	382	9%
40-49	23	1,012	23%
30-39	36	1,223	28%
20-29	21	511	12%
9-19	55	766	18%
Total	148	4,310	100%

Total Value of Building Permits

City and "905" Area



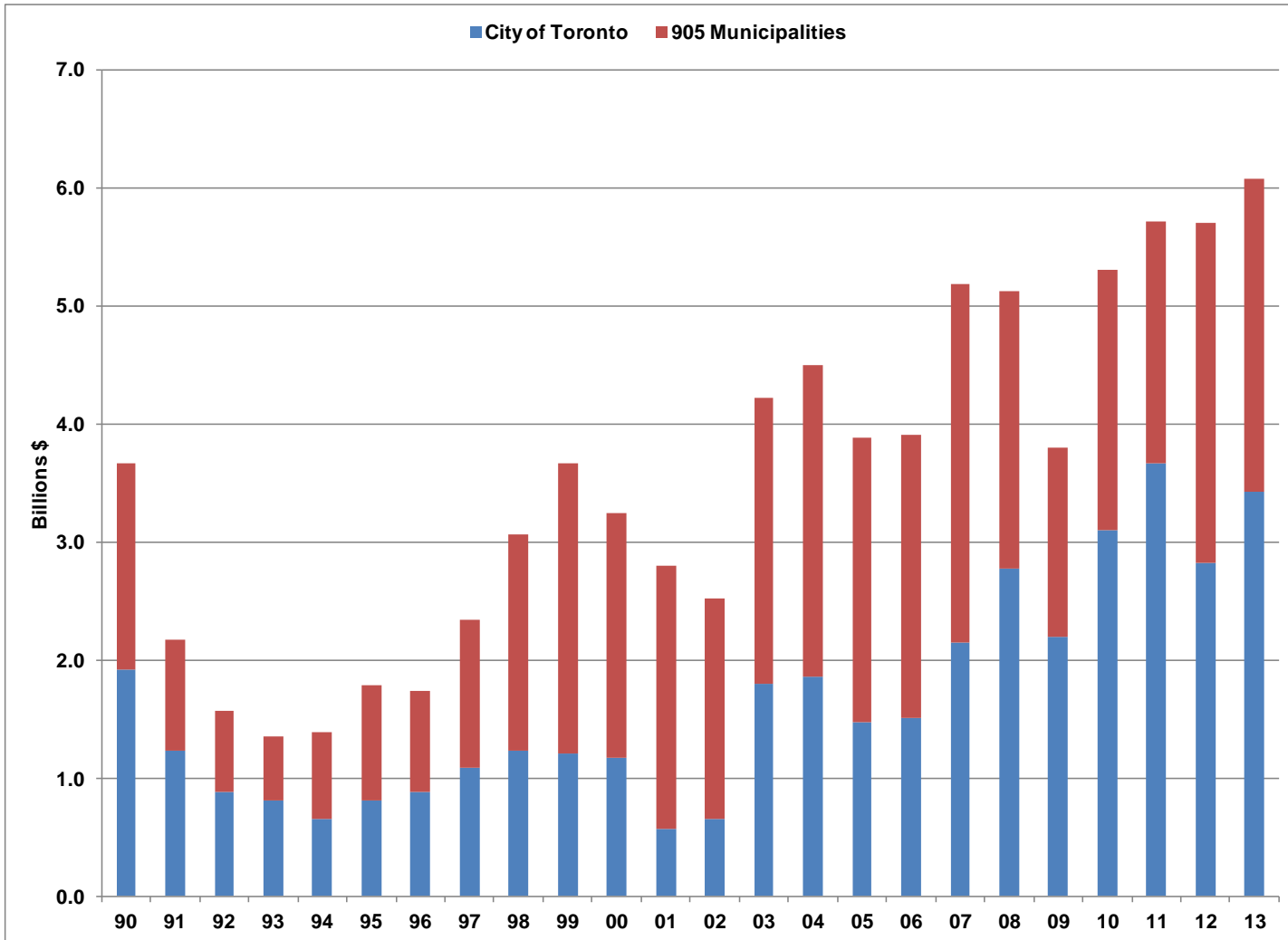
Total Value of Building Permits

City and "905" Area (\$ Billions)

	<u>City of Toronto</u>	<u>905 Municipalities</u>
1990	2.8	3.6
1991	1.8	3.5
1992	1.7	2.6
1993	1.3	2.3
1994	1.3	3.2
1995	1.6	2.7
1996	1.7	2.9
1997	2.1	4.3
1998	2.3	4.8
1999	2.4	6.4
2000	2.2	6.4
2001	1.6	6.6
2002	2.0	7.3
2003	3.7	7.9
2004	3.7	8.4
2005	4.4	7.0
2006	3.5	7.5
2007	4.3	9.0
2008	5.7	6.5
2009	4.8	5.1
2010	6.6	6.4
2011	6.9	7.3
2012	6.2	9.3
2013	7.9	7.5

Value of ICI Building Permits

City and "905" Area



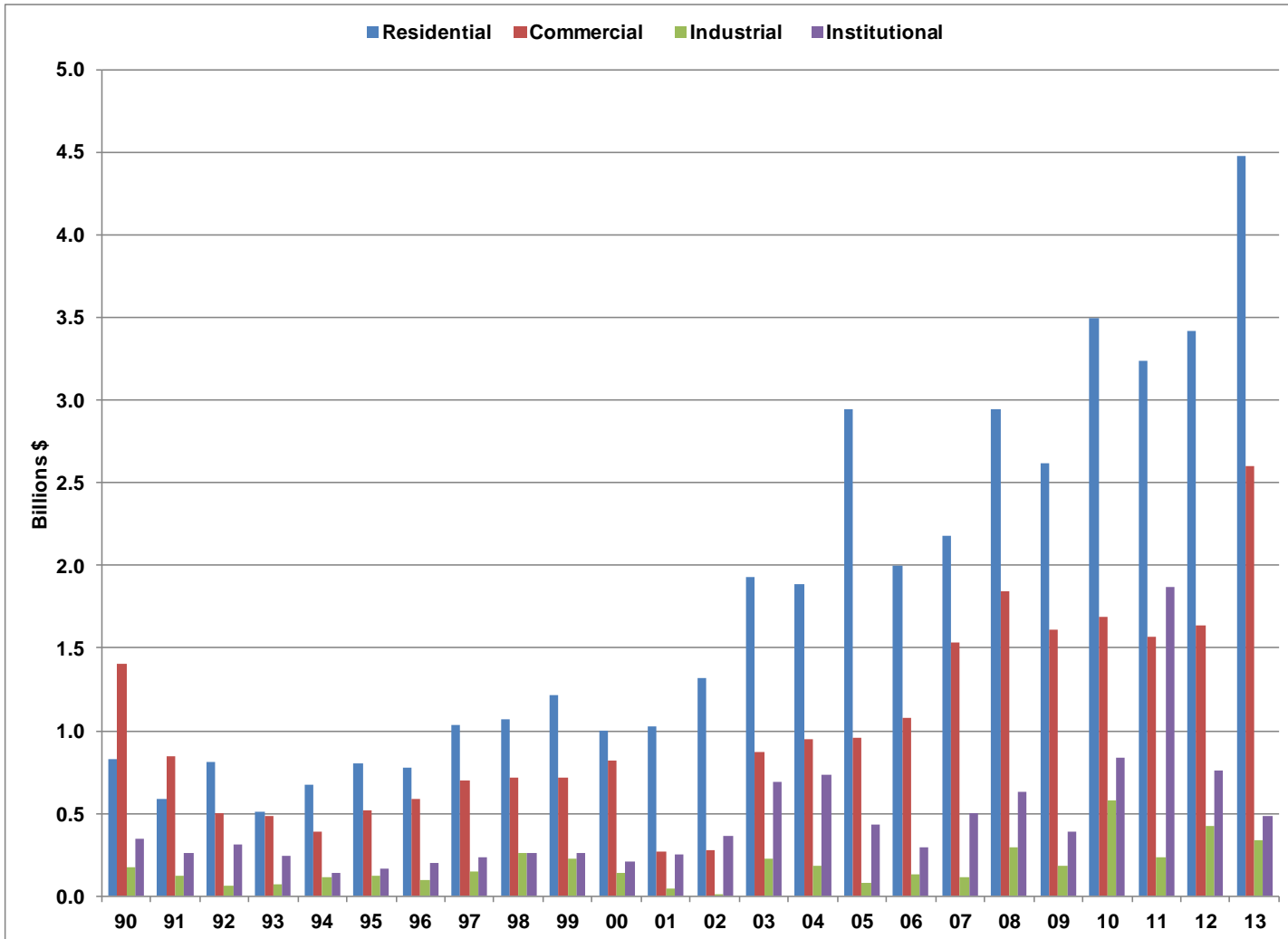
Value of ICI Building Permits

City and "905" Area (\$ Billions)

	<u>City of Toronto</u>	<u>905 Municipalities</u>
1990	1.9	1.7
1991	1.2	0.9
1992	0.9	0.7
1993	0.8	0.5
1994	0.6	0.7
1995	0.8	1.0
1996	0.9	0.9
1997	1.1	1.3
1998	1.2	1.8
1999	1.2	2.5
2000	1.2	2.1
2001	0.6	2.2
2002	0.7	1.9
2003	1.8	2.4
2004	1.9	2.6
2005	1.5	2.4
2006	1.5	2.4
2007	2.1	3.0
2008	2.8	2.3
2009	2.2	1.6
2010	3.1	2.2
2011	3.7	2.0
2012	2.8	2.9
2013	3.4	2.6

Value of Building Permits

City of Toronto

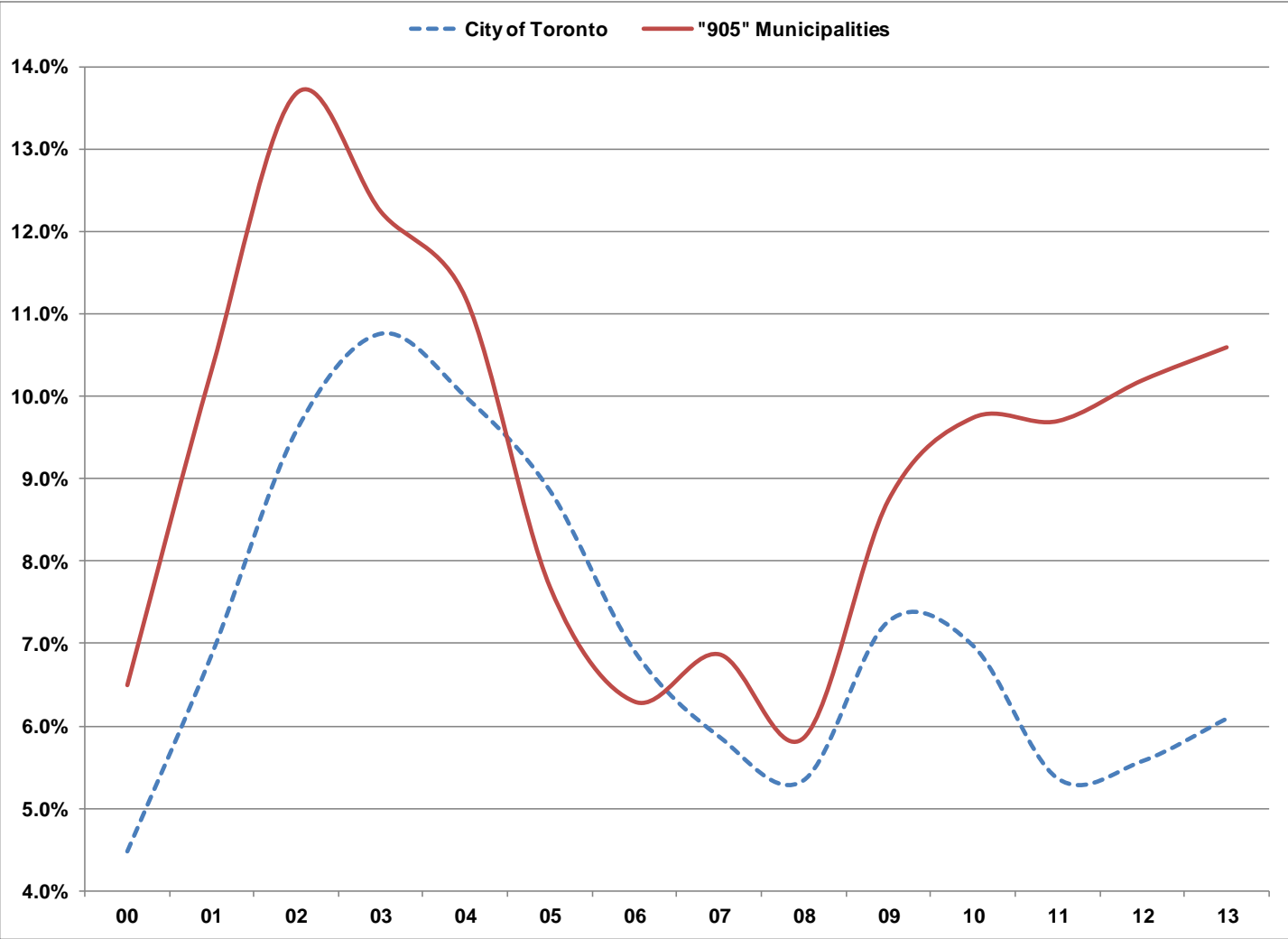


Value of Building Permits

City of Toronto (\$ Billions)

	<u>Residential</u>	<u>Commercial</u>	<u>Industrial</u>	<u>Institutional</u>
1990	0.8	1.4	0.2	0.3
1991	0.6	0.8	0.1	0.3
1992	0.8	0.5	0.1	0.3
1993	0.5	0.5	0.1	0.2
1994	0.7	0.4	0.1	0.1
1995	0.8	0.5	0.1	0.2
1996	0.8	0.6	0.1	0.2
1997	1.0	0.7	0.1	0.2
1998	1.1	0.7	0.3	0.3
1999	1.2	0.7	0.2	0.3
2000	1.0	0.8	0.1	0.2
2001	1.0	0.3	0.0	0.3
2002	1.3	0.3	0.0	0.4
2003	1.9	0.9	0.2	0.7
2004	1.9	0.9	0.2	0.7
2005	2.9	1.0	0.1	0.4
2006	2.0	1.1	0.1	0.3
2007	2.2	1.5	0.1	0.5
2008	2.9	1.8	0.3	0.6
2009	2.6	1.6	0.2	0.4
2010	3.5	1.7	0.6	0.8
2011	3.2	1.6	0.2	1.9
2012	3.4	1.6	0.4	0.8
2013	4.5	2.6	0.3	0.5

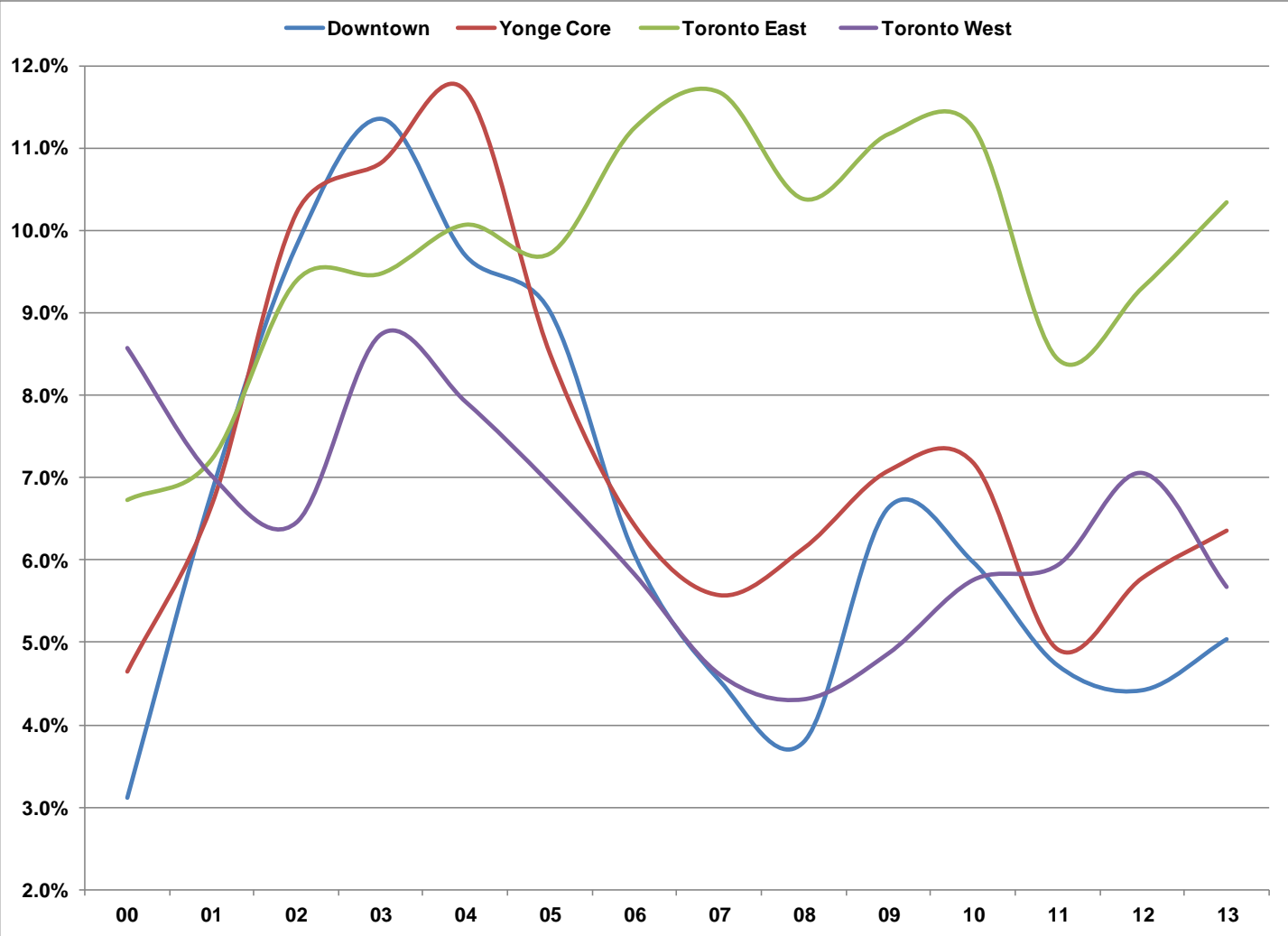
Q4 Office Vacancy Rate



Q4 Office Vacancy Rate

	City of Toronto	"905" Municipalities
2000	4.5%	6.5%
2001	6.9%	10.3%
2002	9.6%	13.7%
2003	10.8%	12.2%
2004	10.0%	11.2%
2005	8.9%	7.7%
2006	6.9%	6.3%
2007	5.9%	6.9%
2008	5.3%	5.9%
2009	7.3%	8.7%
2010	7.0%	9.7%
2011	5.4%	9.7%
2012	5.6%	10.2%
2013	6.1%	10.6%

Q4 Office Vacancy Rates

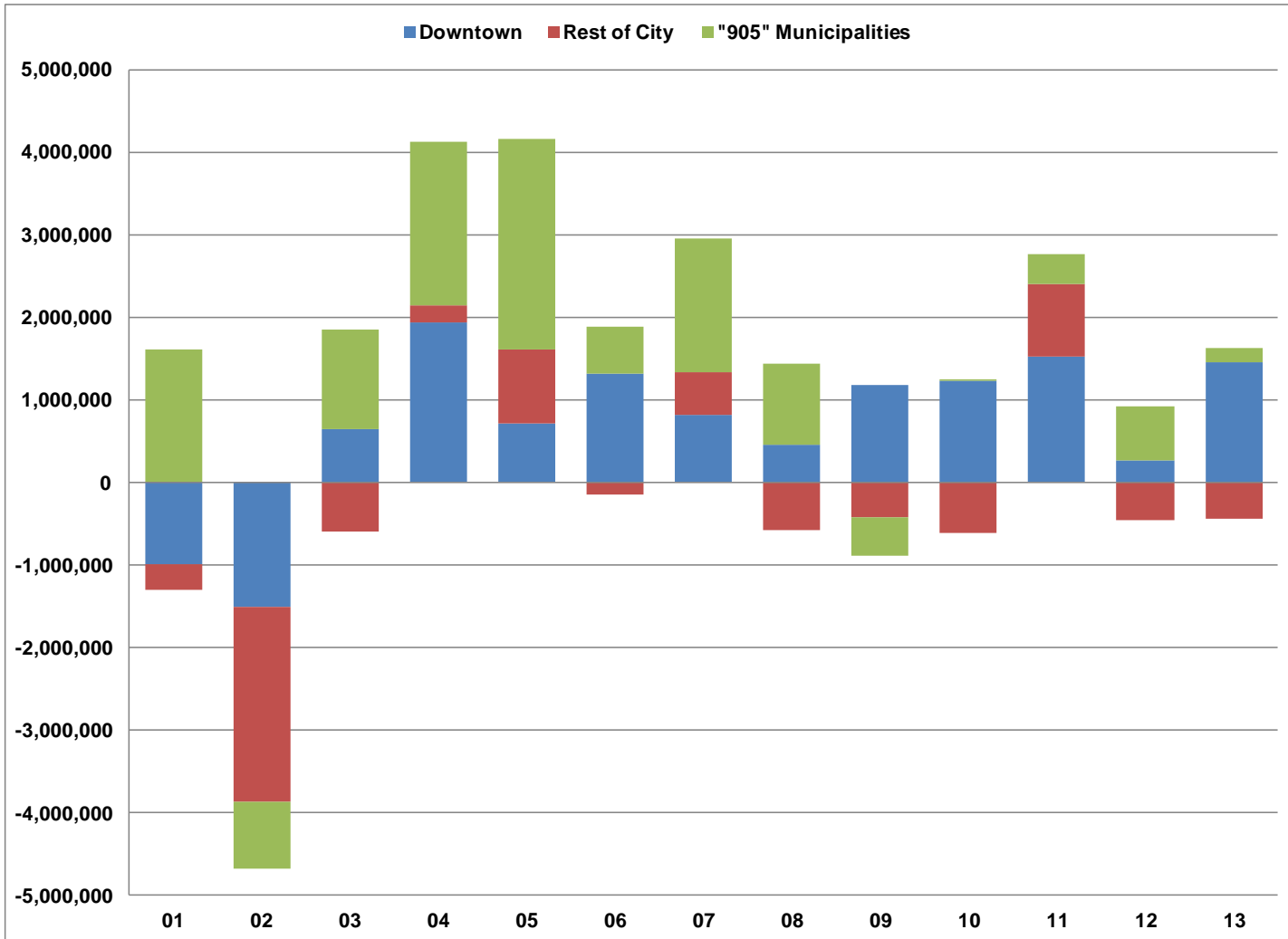


Q4 Office Vacancy Rates

	Downtown	Yonge Core	Toronto East	Toronto West	City of Toronto
2000	3.1%	4.6%	6.7%	8.6%	4.5%
2001	6.8%	6.7%	7.2%	7.0%	6.9%
2002	9.8%	10.2%	9.4%	6.5%	9.6%
2003	11.4%	10.8%	9.5%	8.7%	10.8%
2004	9.7%	11.7%	10.1%	7.9%	10.0%
2005	9.0%	8.5%	9.7%	6.9%	8.9%
2006	6.1%	6.4%	11.2%	5.8%	6.9%
2007	4.5%	5.6%	11.7%	4.6%	5.9%
2008	3.8%	6.1%	10.4%	4.3%	5.3%
2009	6.6%	7.1%	11.2%	4.9%	7.3%
2010	6.0%	7.2%	11.3%	5.8%	7.0%
2011	4.7%	4.9%	8.4%	5.9%	5.4%
2012	4.4%	5.8%	9.3%	7.1%	5.6%
2013	5.0%	6.4%	10.3%	5.7%	6.1%

Annual Change in Occupied Office Space

Toronto Region (square feet)

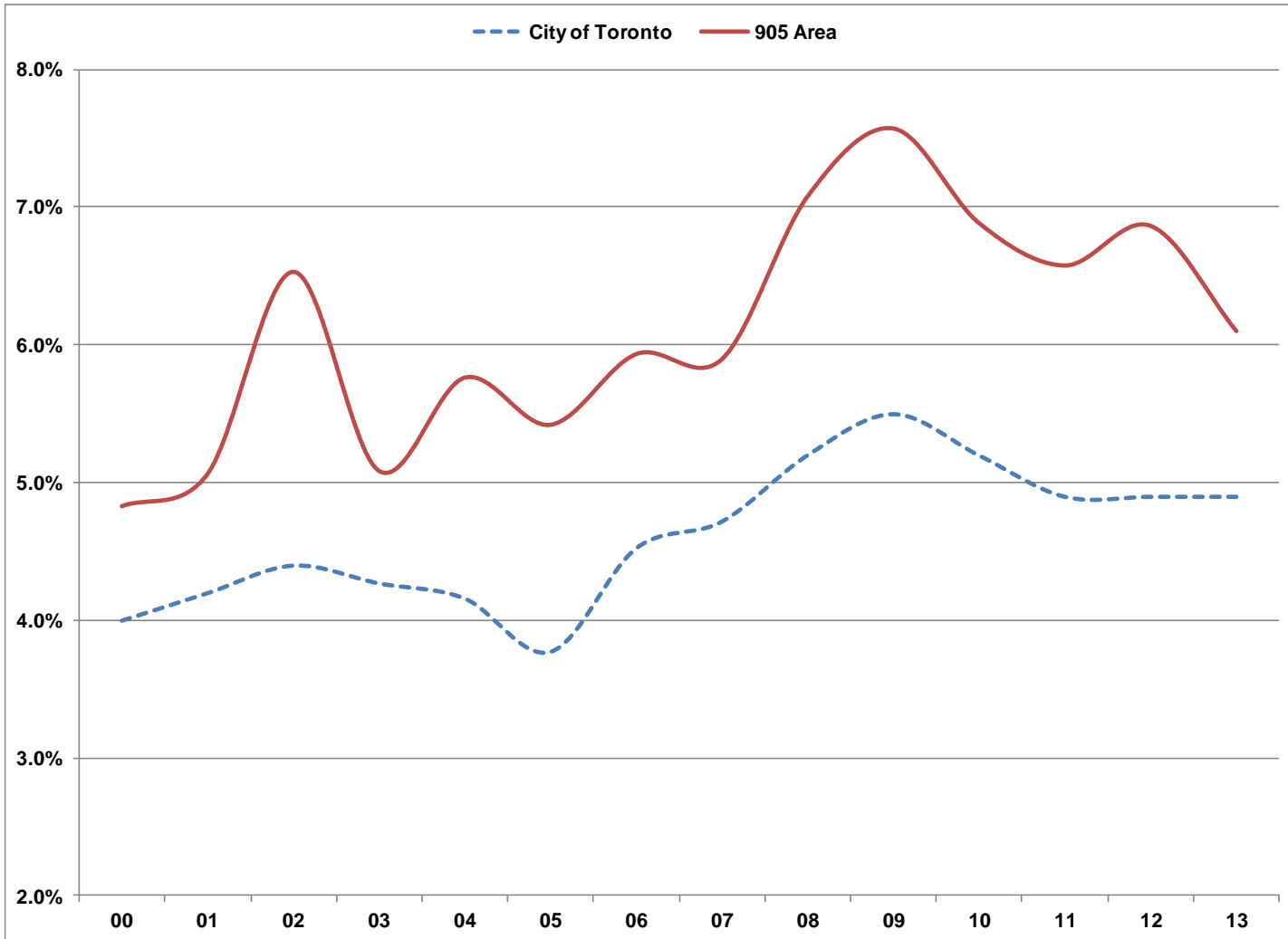


Annual Change in Occupied Office Space

Toronto Region (square feet)

	Downtown	Rest of City	"905" Municipalities	Total
2001	-986432	-324349	1603493	292712
2002	-1509859	-2354737	-820438	-4685034
2003	644292	-601371	1205147	1248068
2004	1941282	201675	1976368	4119325
2005	705728	909166	2539840	4154734
2006	1316807	-148150	563813	1732470
2007	816828	507938	1633199	2957965
2008	456265	-574536	979372	861101
2009	1181967	-420293	-466919	294755
2010	1226009	-605815	10351	630545
2011	1524537	885326	355500	2765363
2012	264451	-450952	654522	468021
2013	1446924	-434849	174658	1186733
2003-08 (6yrs)	5881202	294722	8897739	15073663
2009-13 (5yrs)	5643888	-1026583	728112	5345417
2003-13 (11 yrs)	11525090	-731861	9625851	20419080

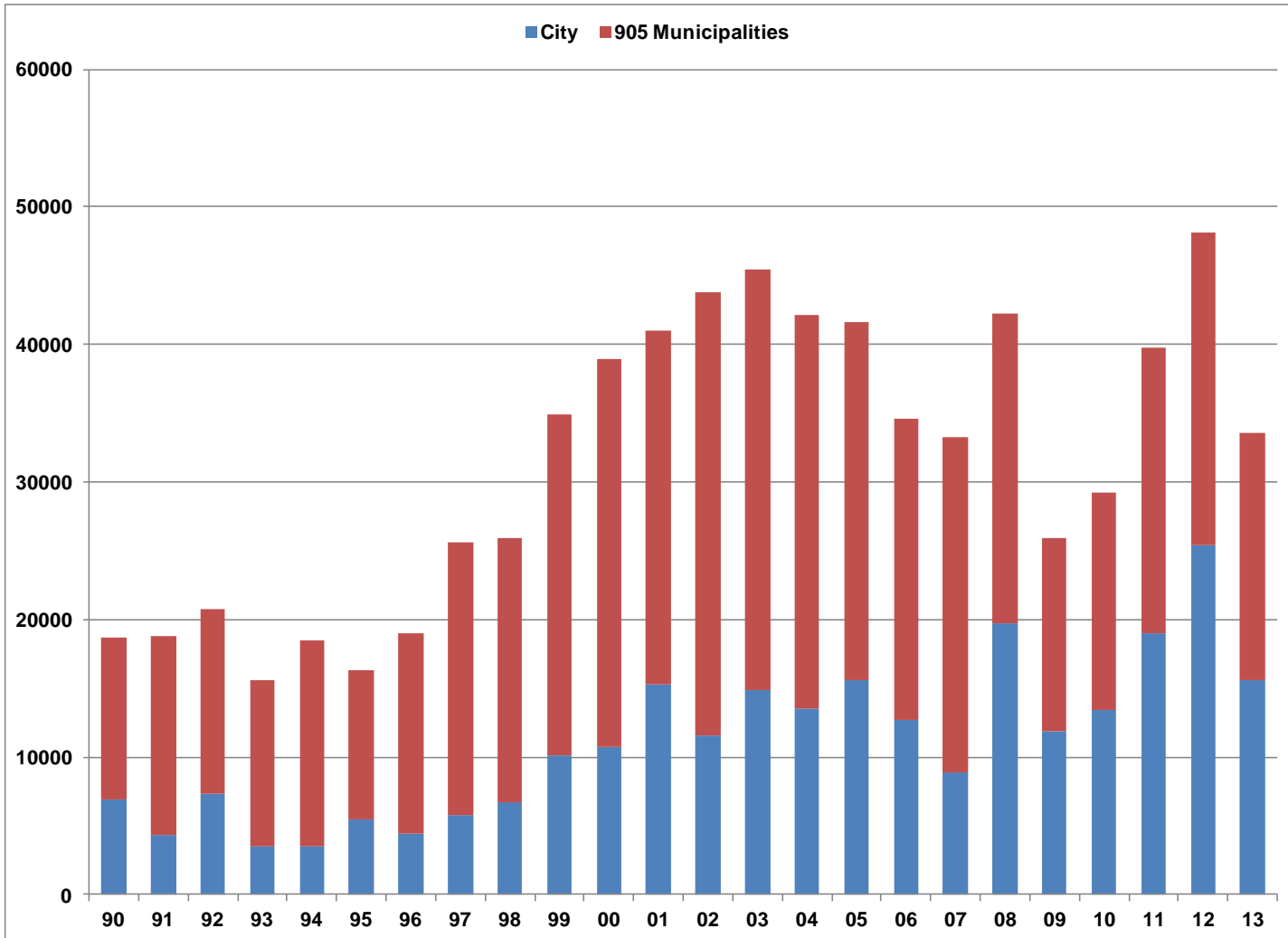
Q4 Industrial Vacancy Rates



Q4 Industrial Vacancy Rates

	City of Toronto	"905" Municipalities
2000	4.0%	4.8%
2001	4.2%	5.1%
2002	4.4%	6.5%
2003	4.3%	5.1%
2004	4.2%	5.8%
2005	3.8%	5.4%
2006	4.5%	5.9%
2007	4.7%	5.9%
2008	5.2%	7.1%
2009	5.5%	7.6%
2010	5.2%	6.9%
2011	4.9%	6.6%
2012	4.9%	6.9%
2013	4.9%	6.1%

Housing Starts Toronto Region



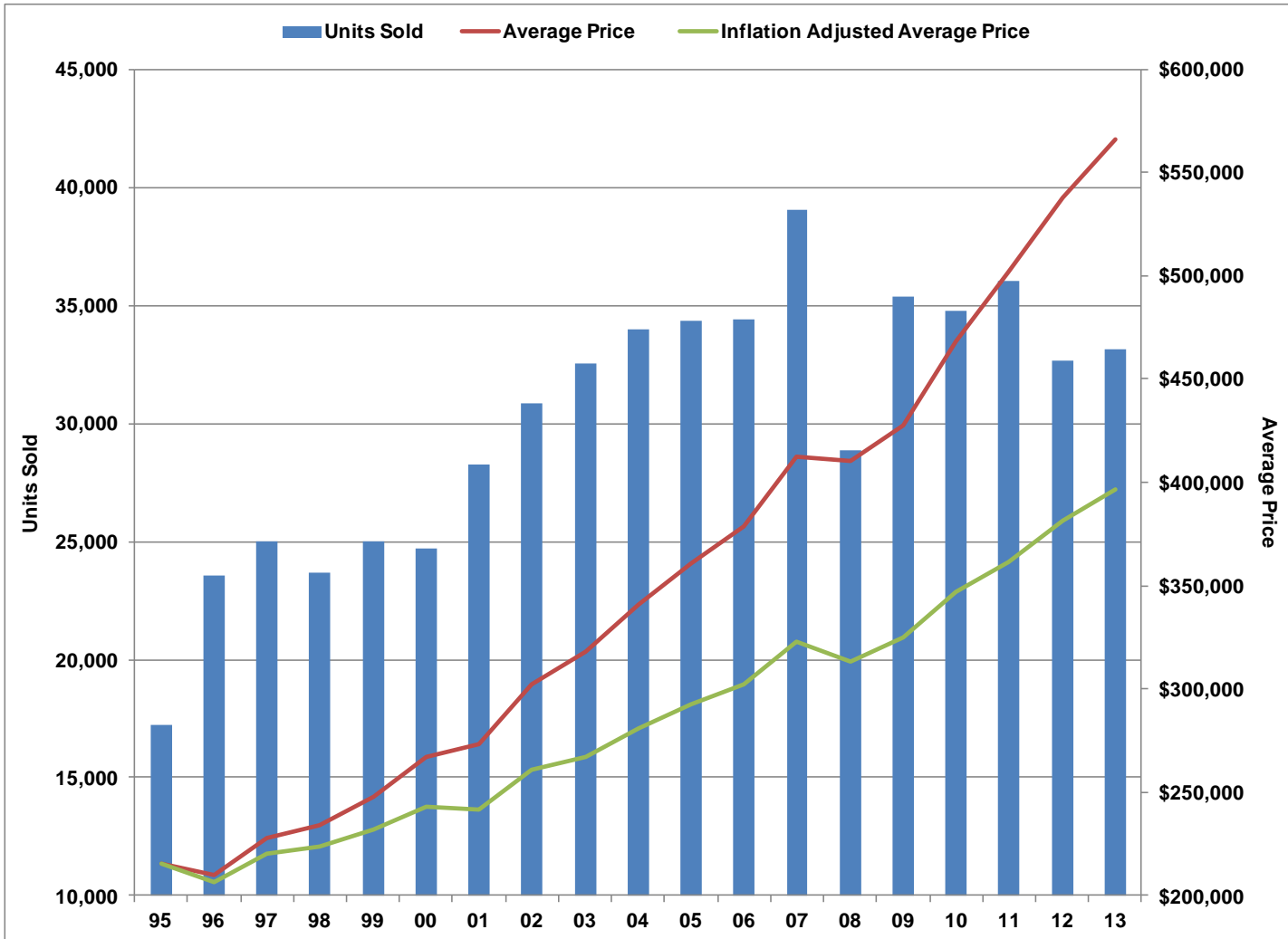
Housing Starts

Toronto Region

	905		
	City	Municipalities	Toronto CMA
1990	6872	11851	18723
1991	4304	14510	18814
1992	7298	13472	20770
1993	3478	12159	15637
1994	3515	14928	18443
1995	5499	10826	16325
1996	4406	14592	18998
1997	5745	19829	25574
1998	6759	19151	25910
1999	10097	24807	34904
2000	10745	28237	38982
2001	15289	25728	41017
2002	11616	32189	43805
2003	14895	30580	45475
2004	13560	28555	42115
2005	15602	25994	41596
2006	12726	21872	34598
2007	8854	24439	33293
2008	19710	22502	42212
2009	11919	14030	25949
2010	13425	15770	29195
2011	18972	20773	39745
2012	25416	22689	48105
2013	15618	17929	33547

MLS Sales and Prices

City of Toronto



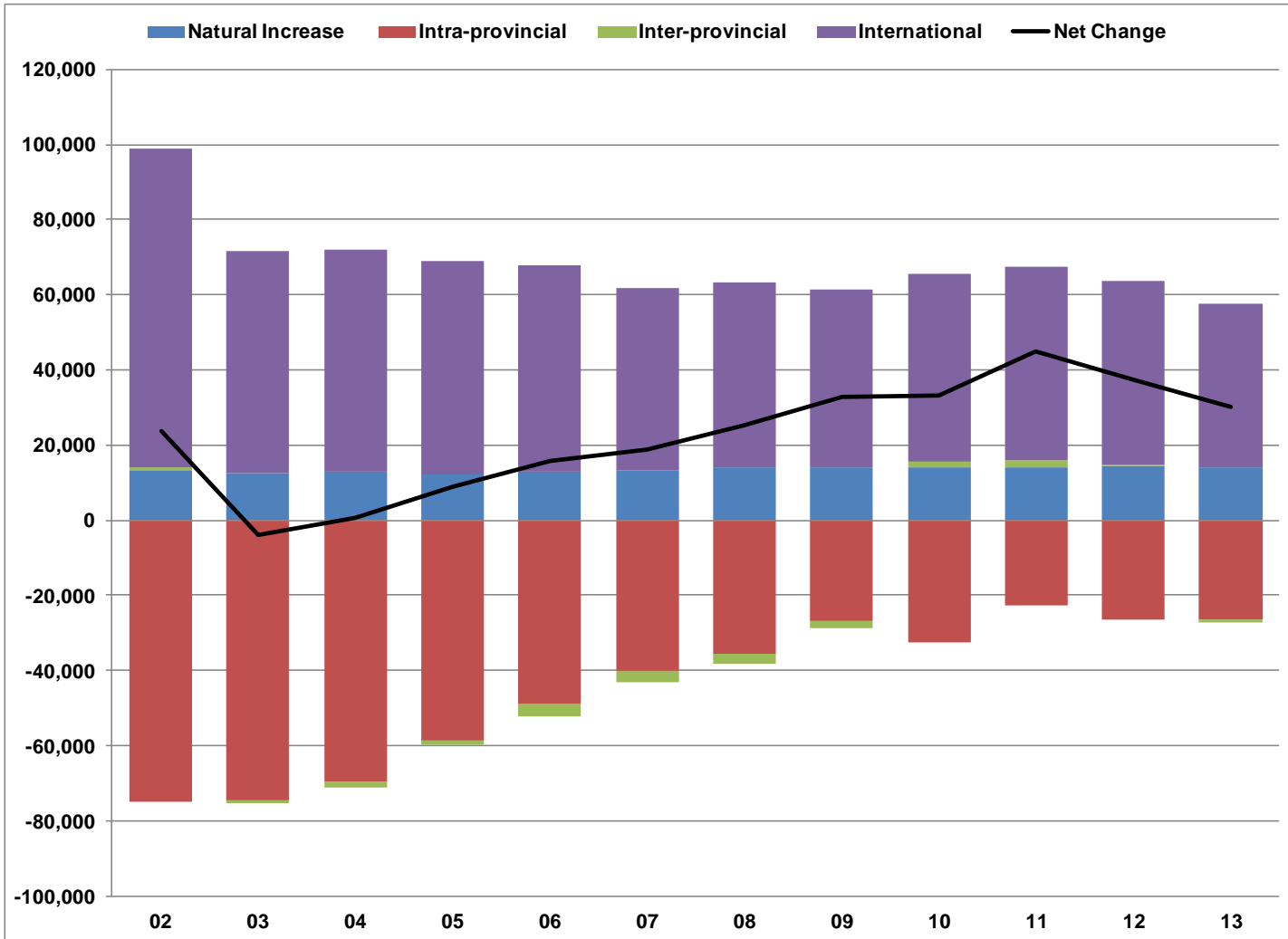
MLS Sales and Prices

City of Toronto

	<u>Units Sold</u>	<u>Average Price</u>	<u>Inflation Adjusted Average Price</u>
1995	17237	215176	215176
1996	23539	210166	206597
1997	24985	227948	220132
1998	23679	233863	223564
1999	24978	247771	232174
2000	24708	266899	242889
2001	28265	273500	241310
2002	30827	301919	260862
2003	32528	318029	266816
2004	33963	340806	281171
2005	34366	361057	292552
2006	34404	378776	301977
2007	39052	412481	322599
2008	28878	410271	313494
2009	35341	427355	325111
2010	34752	468247	347353
2011	36018	501971	361509
2012	32658	538053	381768
2013	33143	565860	396613

Population Change by Component

City of Toronto

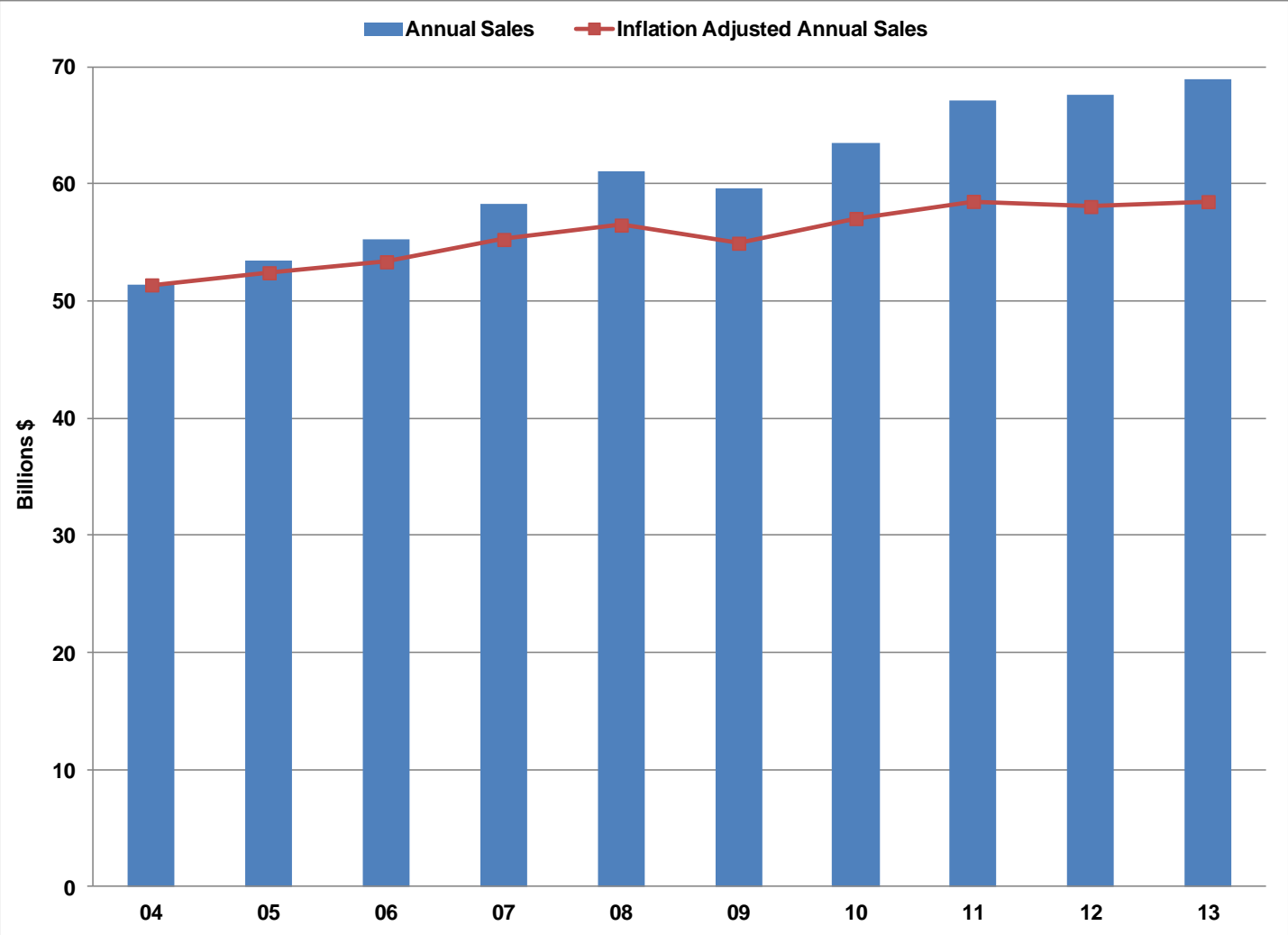


Population Change by Component

City of Toronto

	Natural Increase	Net Intra- provincial	Net Inter- provincial	Net Intern'l Migration	Total Pop'n Change
2001/2002	13,238	-75,000	764	84,686	23,688
2002/2003	12,609	-74,655	-573	58,808	-3,811
2003/2004	12,808	-69,539	-1,539	59,000	730
2004/2005	12,275	-58,804	-1,176	56,746	9,041
2005/2006	12,968	-48,816	-3,236	54,770	15,686
2006/2007	13,285	-39,967	-3,327	48,621	18,612
2007/2008	14,041	-35,619	-2,426	49,158	25,154
2008/2009	13,935	-26,750	-2,014	47,496	32,667
2009/2010	14,219	-32,556	1,486	49,839	32,988
2010/2011	13,940	-22,525	1,943	51,701	45,059
2011/2012	14,309	-26,330	580	48,592	37,151
2012/2013	14,081	-26,330	-1,076	43,320	29,995

Retail Sales Toronto CMA

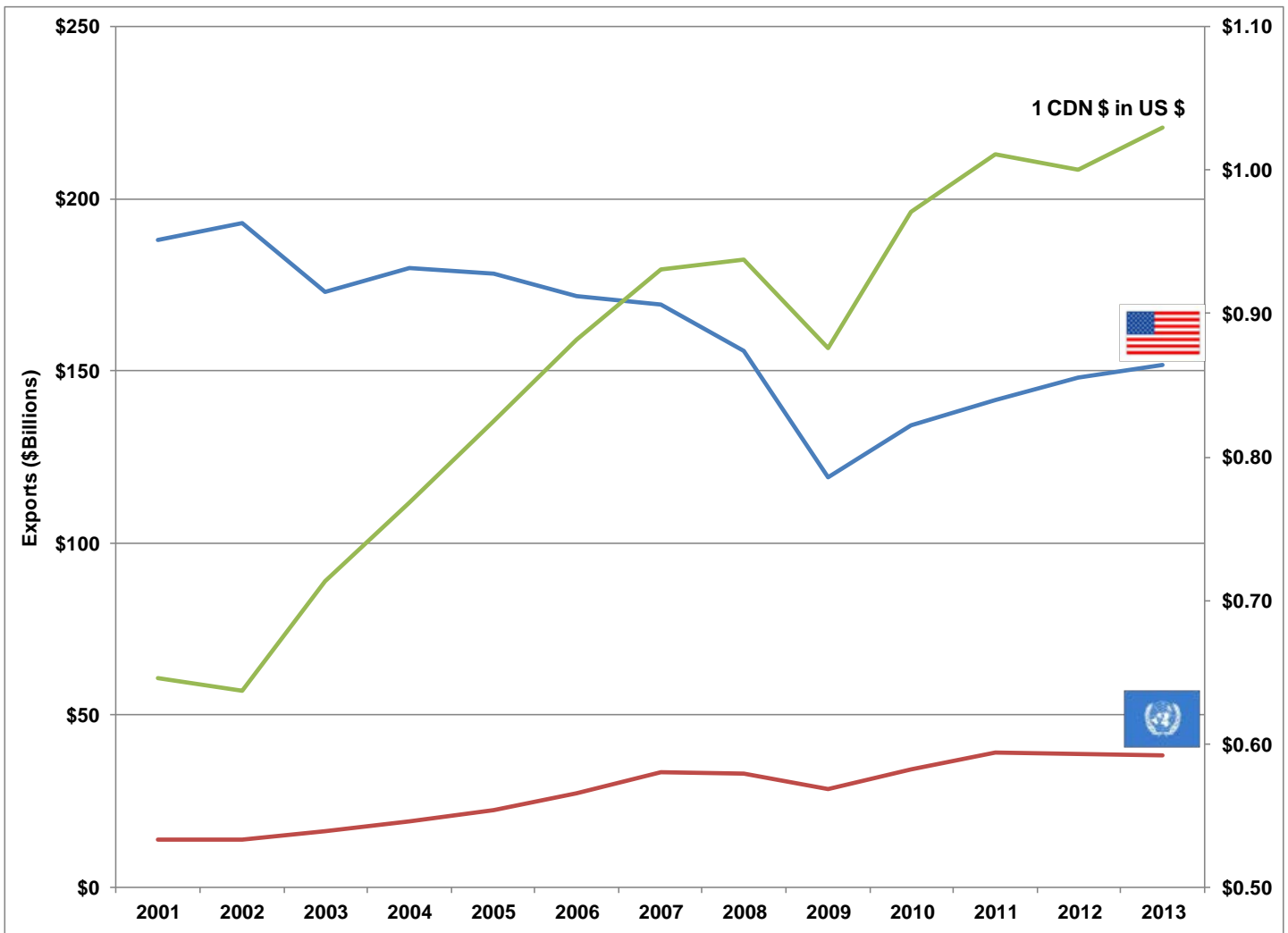


Retail Sales

Toronto CMA (\$ Billions)

	Annual Sales	% Change	Inflation Adjusted Annual Sales	% Change
2004	51.4		51.4	
2005	53.4	4.0%	52.4	2.0%
2006	55.3	3.4%	53.4	1.8%
2007	58.3	5.6%	55.3	3.6%
2008	61.0	4.6%	56.5	2.2%
2009	59.6	-2.3%	55.0	-2.7%
2010	63.5	6.5%	57.1	3.8%
2011	67.1	5.6%	58.5	2.6%
2012	67.6	0.7%	58.1	-0.7%
2013	68.9	2.0%	58.5	0.7%

Ontario Merchandise Exports & US\$ Exchange Rate



Source: Exports - Industry Canada, Exchange Rate - Bank of Canada

Ontario Merchandise Exports & US\$ Exchange Rate

	Exports (Billions \$)			Exchange
	US	All Others	Total	
2001	187.9	13.8	201.7	0.646
2002	192.8	13.7	206.5	0.637
2003	172.8	16.3	189.1	0.714
2004	180.1	18.9	199.0	0.768
2005	178.3	22.5	200.8	0.825
2006	171.7	27.1	198.8	0.882
2007	169.3	33.2	202.5	0.930
2008	155.9	32.8	188.7	0.938
2009	119.2	28.6	147.8	0.876
2010	134.2	34.0	168.2	0.971
2011	141.4	39.1	180.5	1.011
2012	148.1	38.8	187.0	1.000
2013	151.6	38.3	190.0	1.030

